

Priority 1

AP 1001

Three Mile Island Nuclear Station
Special Operating Procedure

SIDE 1

Figure 1001-8

SOP No. 2-73
(From SOP Log Index)

NOTE: Instructions and guidelines in AP 1001 must be followed when completing this form.

NRC

Unit No. 2

Date _____

- Title Alternate OTSG Level Indication
- Purpose (include purpose of SOP) To provide OTSG level indication upon loss of OTSG Level Indication (EP-15)

3. Attach procedure to this form written according to the following format.

- A. Limitations and Precautions
- Nuclear Safety
 - Environmental Safety
 - Personnel Safety
 - Equipment Protection
- B. Prerequisites
- C. Procedure

Attached

4. Generated by Ed Lehman Date 4-7-79

5. Duration of SOP - Shall be no longer than 90 days from the effective date of the SOP or (a) or (b) below - whichever occurs first.

- (a) SOP will be cancelled by incorporation into existing or new permanent procedure submitted by MA
- (b) SOP is not valid after MA
(fill in circumstances which will result in SOP being cancelled)

6. (a) Is the procedure Nuclear Safety Related?
If "yes", complete Nuclear Safety Evaluation. (Side 2 of this Form) Yes No
- (b) Does the procedure affect Environmental Protection?
If "yes", complete Environmental Evaluation. (Side 3 of this Form) Yes No
- (c) Does the procedure affect radiation exposure to personnel? Yes No

NOTE: If all answers are "no", the change may be approved by the Shift Supervisor. If any questions are answered "yes", the change must be approved by the Unit Superintendent.

7. Review and Approval

Approved - Shift Supervisor	_____	Date	_____
Reviewed - List members of PORC contacted	<u>V.P. Wianski</u>	Date	<u>4/9/79</u>
	<u>RP Warren</u>	Date	<u>4/9/79</u>
	<u>RWB</u>	Date	<u>4/9/79</u>
	<u>John J. ...</u>	Date	<u>4/9/79</u>
Approved - Unit Superintendent	<u>FW</u>	Date	<u>4/9/79</u>

8. SOP is Cancelled

132 065

Shift Supervisor/Shift Foreman

Date

1 Limits & Precautions

- 1.1 Insure that the 4 Feed water Latch Bypass Switches, Located in the upper right hand corner of Panel 4 are in the Bypass Position Prior to Performing any work at the Feedwater Latch DIP Switches.
- 1.2 Maintain 'Operative' Range SG Level at $95 \pm 4\%$.
- 1.3 Operators should recognize that RCS Temp. will drop a few degrees during OTSG Level Increases.
- 1.4 Other operations which will affect the required Steaming rate, or feedrate should not be conducted during this evolution. RCS ~~temp~~^{pressure} and ~~Pressure~~^{temperature} should be 50 PSIG and $10^{\circ}F$ respectively above the minimum operating limits before conducting this evolution.
- 1.5 This Level Indication is only valid for Levels Above the Feedwater Nozzels 132.066
- 1.6 This Level Indication is only valid for feed water Flows Less than $2\frac{1}{2}\%$

107. Observe Standard H.P. Procedures
for the installation of the P/P
Transmitter on Contaminated or
possibly contaminated Systems.

2 Installation

2.1 Calibrate the Two 'Response Time' Test D/P Transmitters for 0-20"

2.2 Install these Two D/P Transmitter in the Test connections for FW-DPIS 7883-1 'A' Steam Generator (FW-DPIS 7883-2 'B' Steam Generator)

2.3 Use the spare wires in IT 1854C #9 and 10 for 'A' SG (and #11 + 12 for 'B') to Run the Signal to the Relay Room. (from Rack 436 to Cab. 221)

2.4 Use Twisted Pair to Run the Signal from Cab 221 to Cab 149 (ICS #1)

2.5 Use the spare wires in CR91C # 15 + 16 for 'A' (and #17 + 18 for 'B') to Run the Signal to Panel 4 in the Control Room.

2.6 Run the Signal from Panel 4 to a two Pin Brush Recept. Pin 1 'A' SG (Pin 2 'B' SG) AND/OR DUM.

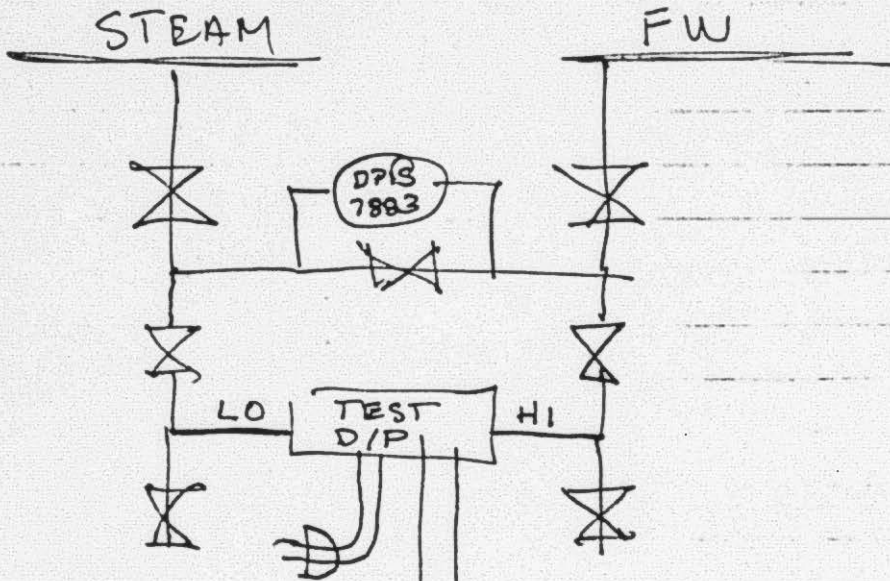
2.7 With Feed water flow Established, at approximately 10% Water level just above the Feed Water Nozzles #360" Full Run

- or about 95% operating range.
- 2.8 Record the indicated ΔP and the level from the operating S.G. Level ~~Just~~ Indicators.
- 2.9 Increase the S.G. Level to approximately 99% operating level or approximately 388 in full range.
- 2.10 Use these two points and the corresponding levels to plot a graph of S.G. Level vs ΔP on Enclosure 1.

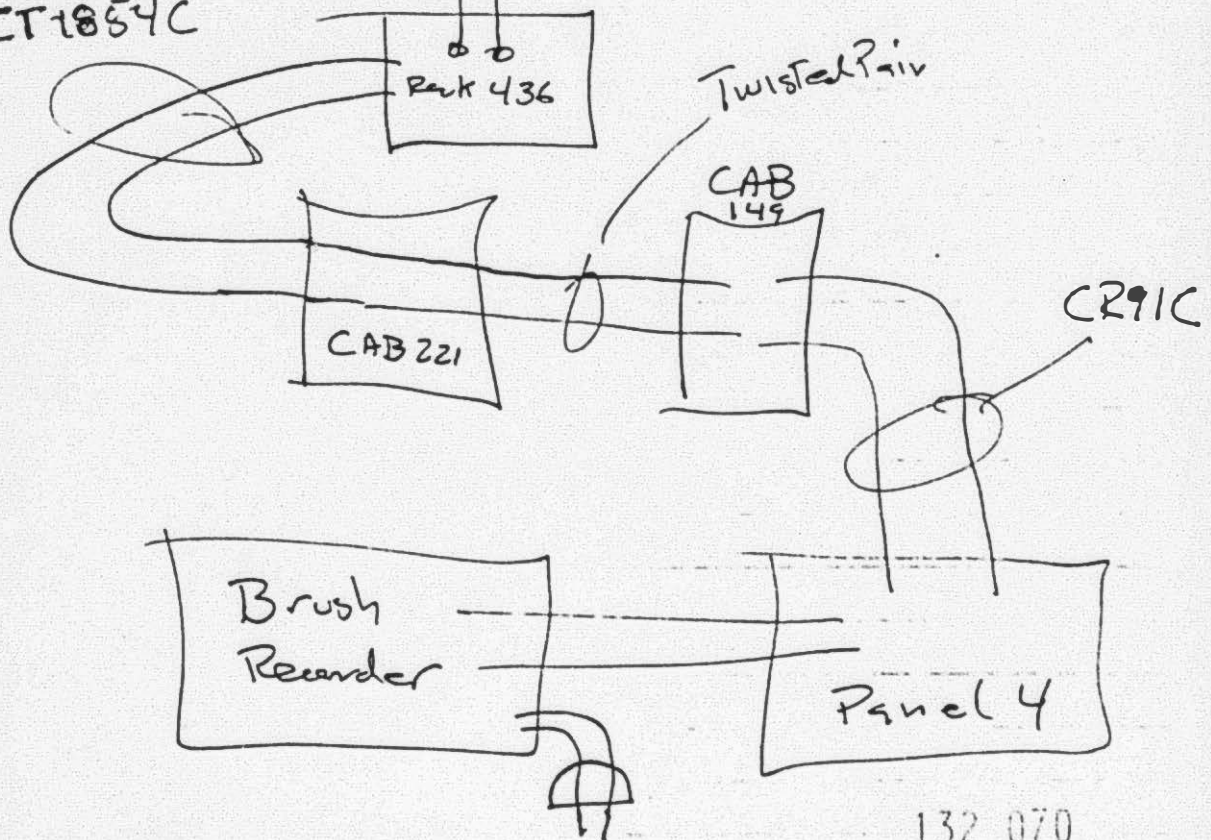
~~2.10~~

Note: Copies of Enclosure 1 must be inserted in EP 15 after completion of this SOP

Note: If available at the time the Bailey 0-500" BQ Transmitter may be used instead of the "Response Time" D/P Transmitter as stated in 2.1



IT1854C



Enclosure 1

ΔP vs Indicated level

132 071